

BBL

Box Bullet Line
for pragmatic modeling

April 2015



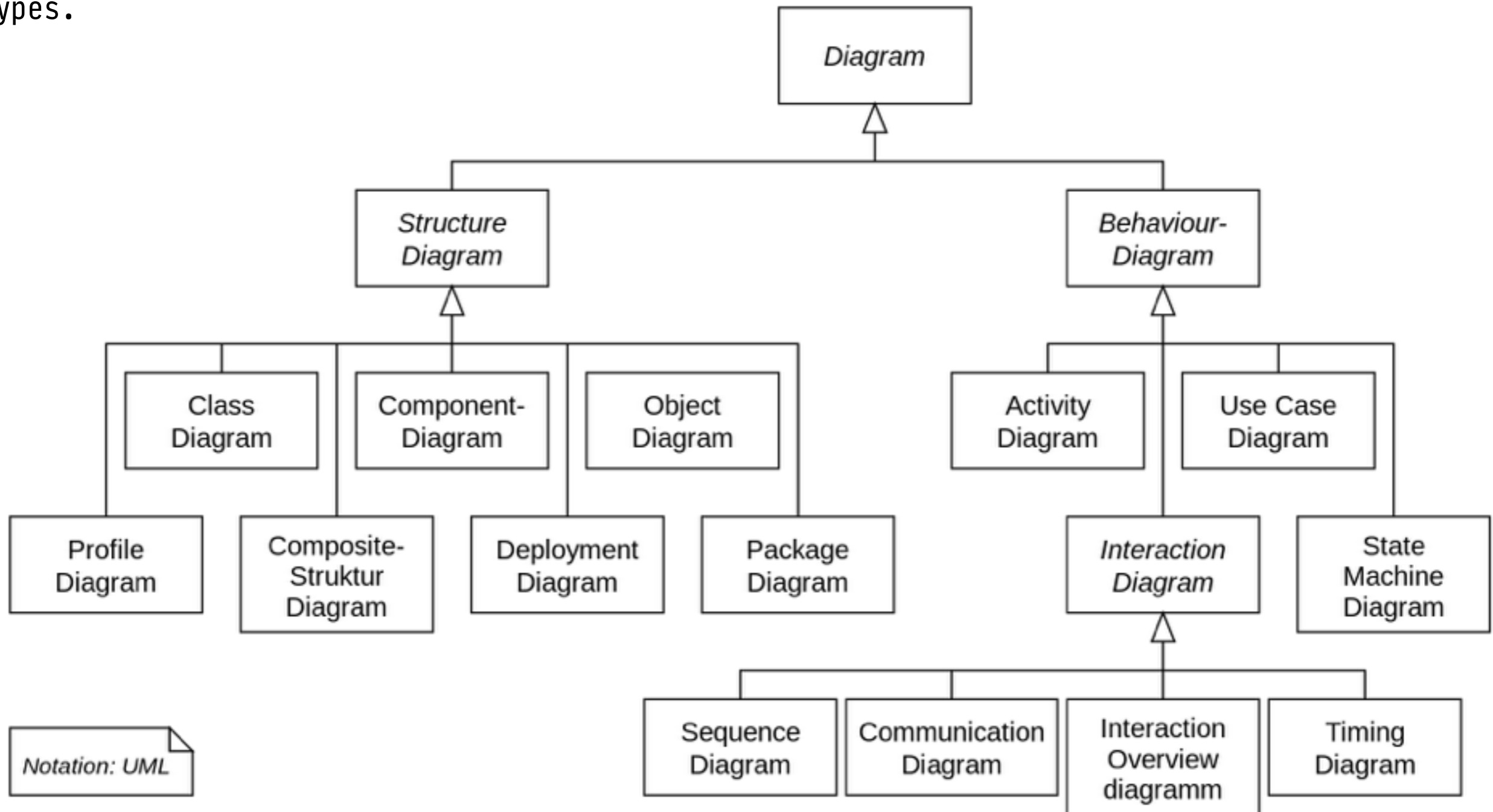
Ulf Schneider

<http://ulf.codes/bbl>

There is no single diagram type
to cover all aspects of
a computer system model.

UML

UML responds with different diagram types.



Do you know your UML diagram types?

There is help.

Box Bullet Line

model data flow, caller and sequence
see components and their dependencies
draw easily by hand

Start with dependencies



components A and B are somehow dependent

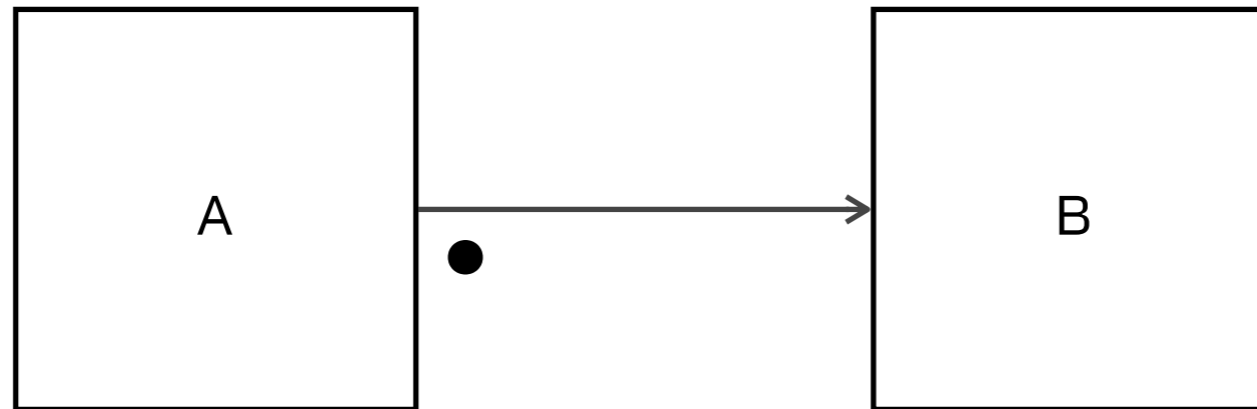
Flow



flow from A to B

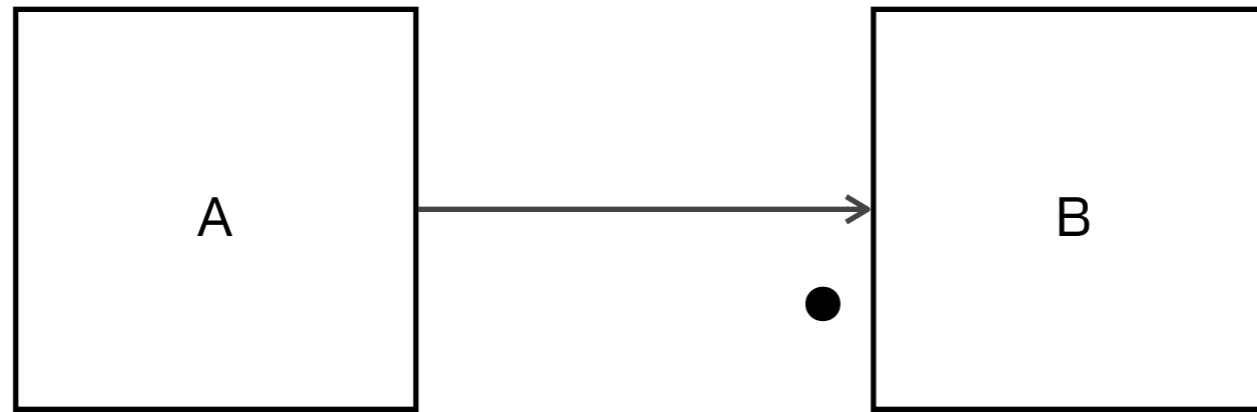
does not differentiate control or data flow

Caller, push



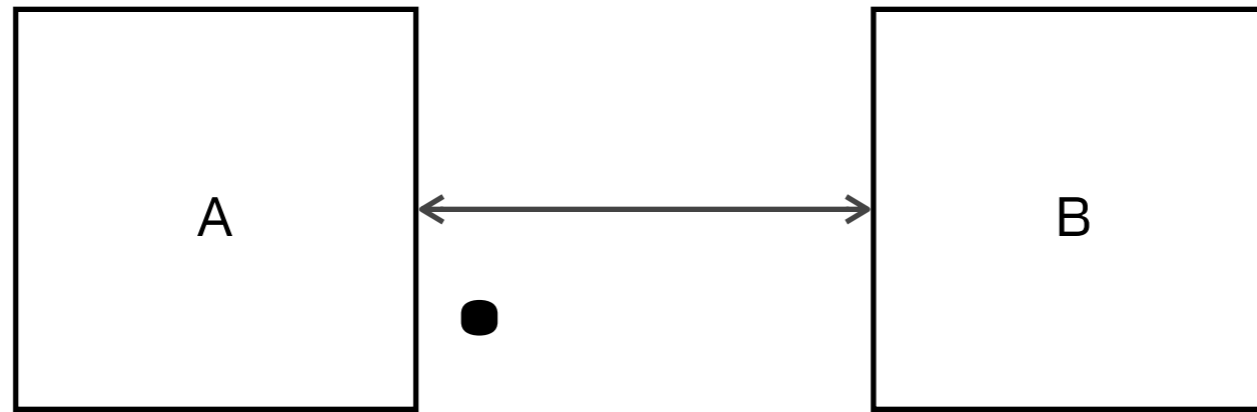
A is calling, flow to B

Caller, pull



B is calling, flow to B

Synchronous



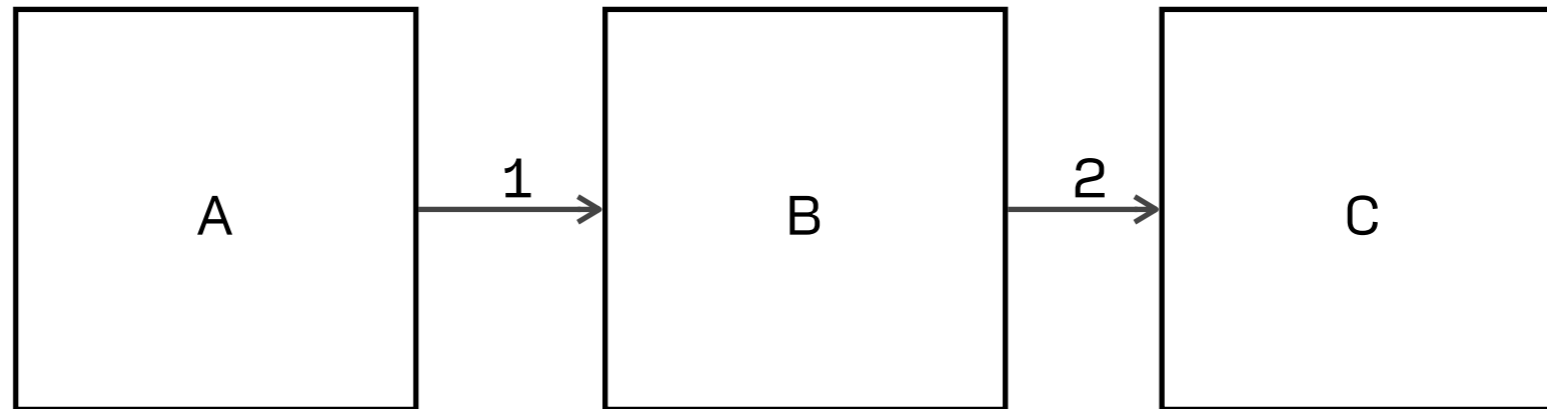
A initiates a synchronous communication

it is not defined

if A writes first to B and afterwards
getting a response from B,

or A reads first and writes back to B

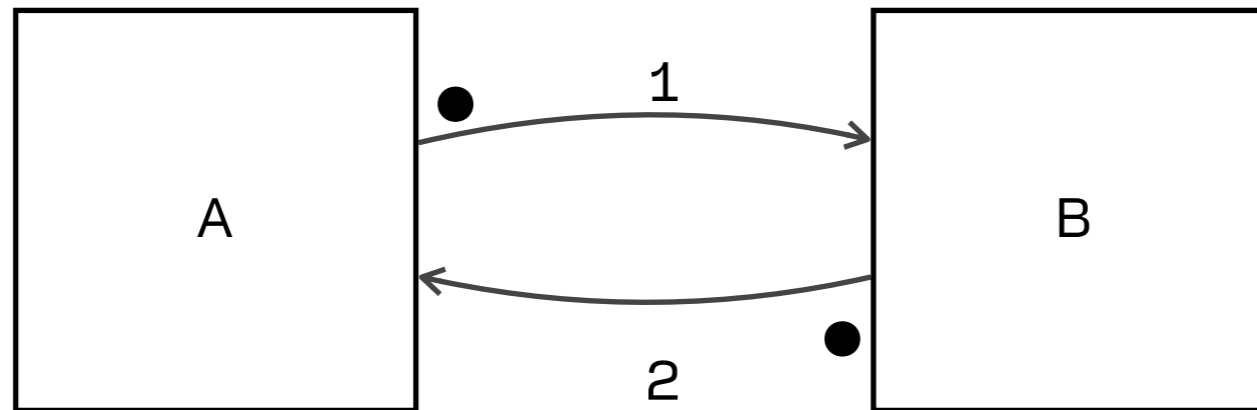
Sequence



1. flow from A to B

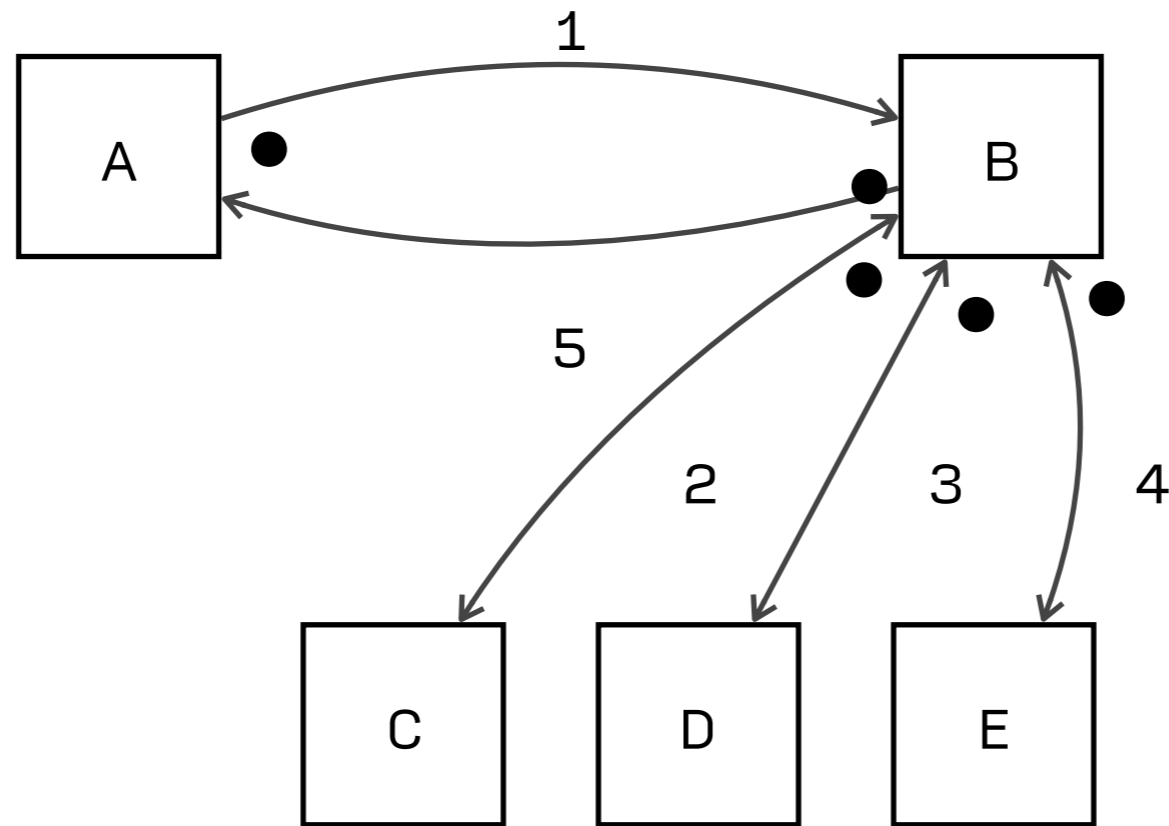
2. flow from B to C

Asynchronous



1. A is calling, flow to B
2. B is calling, flow to A

Test yourself



Wrap up

Pragmatic

No special tools

Start small and grow natural



BBL

Model natural



Ulf Schneider

<http://ulf.codes/bbl>